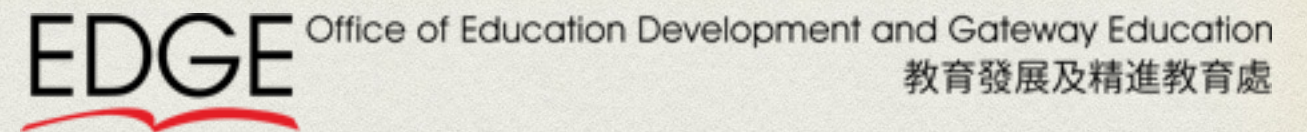


APPRECIATE THE FEATURES OF ANCIENT CULTURAL HERITAGE THROUGH IMMERSIVE VIRTUAL REALITY LEARNING

Siu Wo Tarloff Im, Lin Li, Pit Ho Patrio Chiu and Michelle Ng
City University of Hong Kong

BACKGROUND



- Office of Education Development and Gateway Education
- Chinese Civilisation Centre


[About EDGE ▾](#)
[Faculty Supports ▾](#)
[Student Supports ▾](#)
[Gateway Education ▾](#)
[Teaching Grants ▾](#)
[Introduction](#)
[GE Requirements](#)

- 2014/15 Onwards
- 2012/13 & 2013/14
- Before 2012/13

[GE Course Information](#)
[GE Laboratory](#)

- [GE Laboratory - Home](#)
- [GE Laboratory - Services](#)
- [GE Laboratory - Safety Regulations](#)
- [GE Laboratory - Equipment List](#)

[For Students](#)

- [What is GE?](#)
- [GE Programme Intended Learning Outcomes](#)
- [GE Credit Transfer Guideline](#)
- [Cross Institutional GE](#)
- [Contacts](#)

[For Faculty](#)

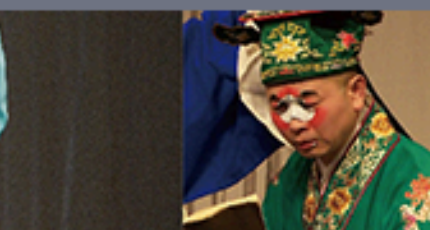
- [GE in University Education](#)
- [GE Programme Intended Learning Outcomes](#)
- [Curricular Mapping of GE programme](#)
- [Information on Proposal Submission](#)
- [GE Course Triennial Review](#)

Gateway Education Laboratory

A Gateway Education Laboratory (GE Lab), with more than 170 sq.m. of space, is situated at the purple zone on the 4th floor in Yeung Kin Man Academic Building. As one of the President's and Provost's initiative to support the Discovery-enriched Curriculum (DEC), CityU has invested HK\$ 4M in the establishment of this laboratory in 2013. The GE Lab provides multiple functions to support close to 260 GE courses for conducting interactive teaching and learning activities. The GE Lab consists of two rooms: P4801 and P4907.

Update: GE Lab is reported in the QS Asia Quarterly Newsletter, please check the [Media Coverage section](#).





江蘇省演藝集團崑劇院

Kun Opera Theatre of the Jiangsu Performing Arts Group



釵釧記·講書
釵釧記·落院
療妒羹·題曲
時劇·借靴

日期: 2018年4月20日(星期五)

時間: 19:00

蛟綃記·寫狀
幽閨記·拜月
紅梨記·醉皂
雷峰塔·斷橋

日期: 2018年4月21日(星期六)

時間: 19:00

地點: 香港城市大學劉鳴煒學術樓(AC3)五樓黃翔羅許月伉儷講堂



中國文化是很重要的一環



23:40

中心資訊

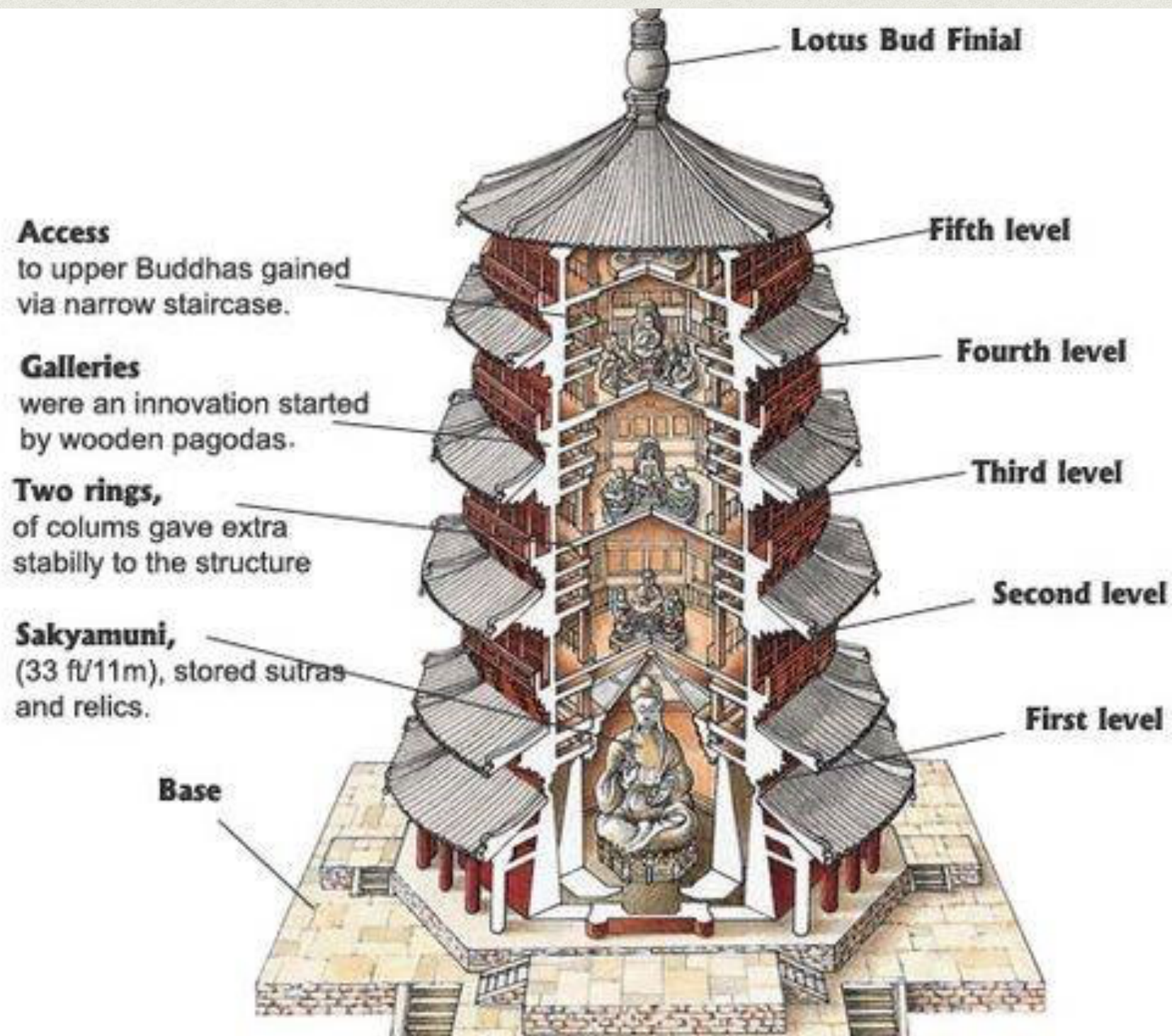
中國文化中心講座系列自學計劃

主辦單位: 香港城市大學中國文化中心

贊助: 中國文化中心中國文化研習學生活動基金

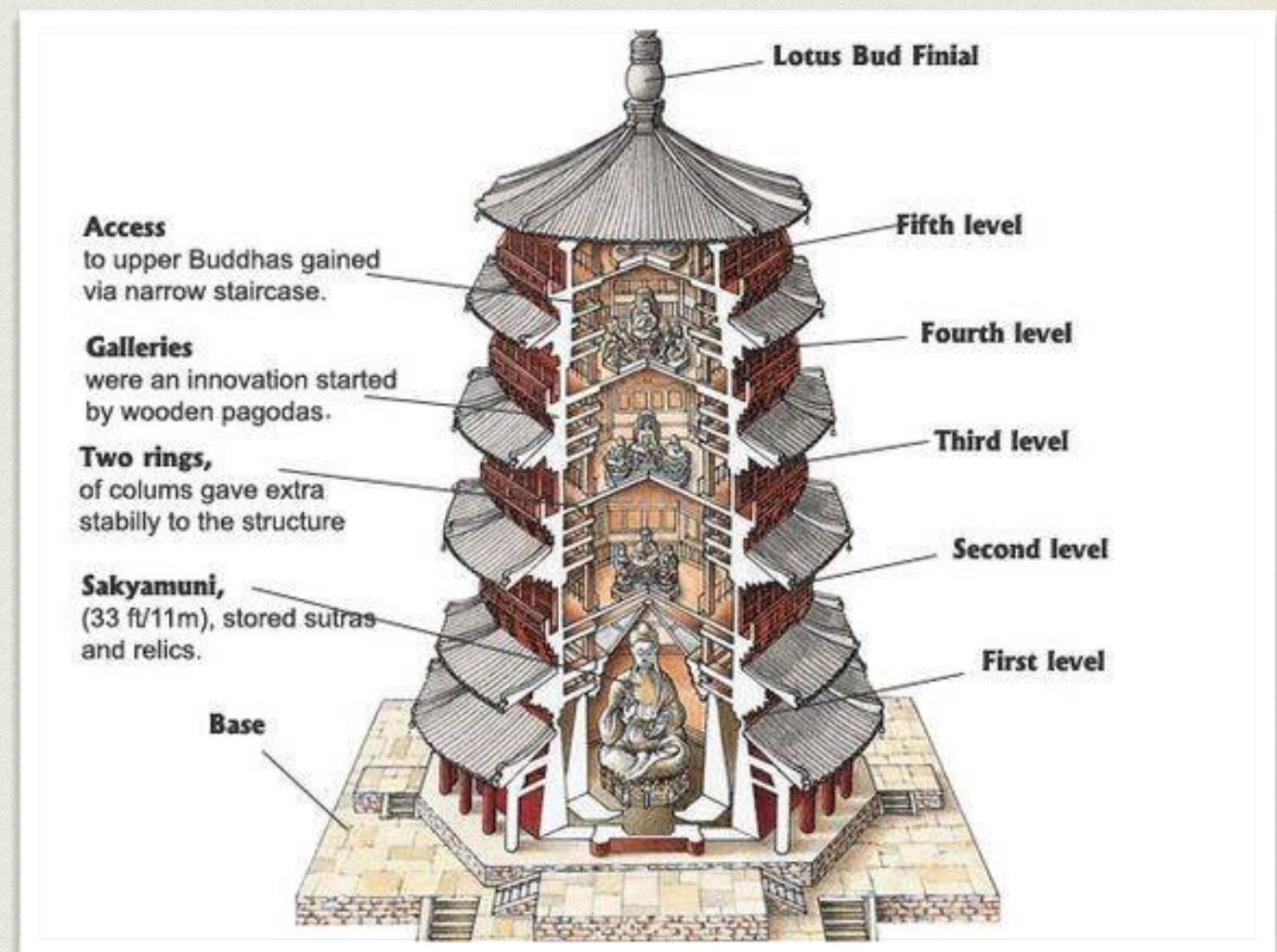
BACKGROUND

- General Education course - GE1125
Architecture and Space in Chinese Culture
建築空間與中國文化
- Field trip schedule is only able to arrange in summer

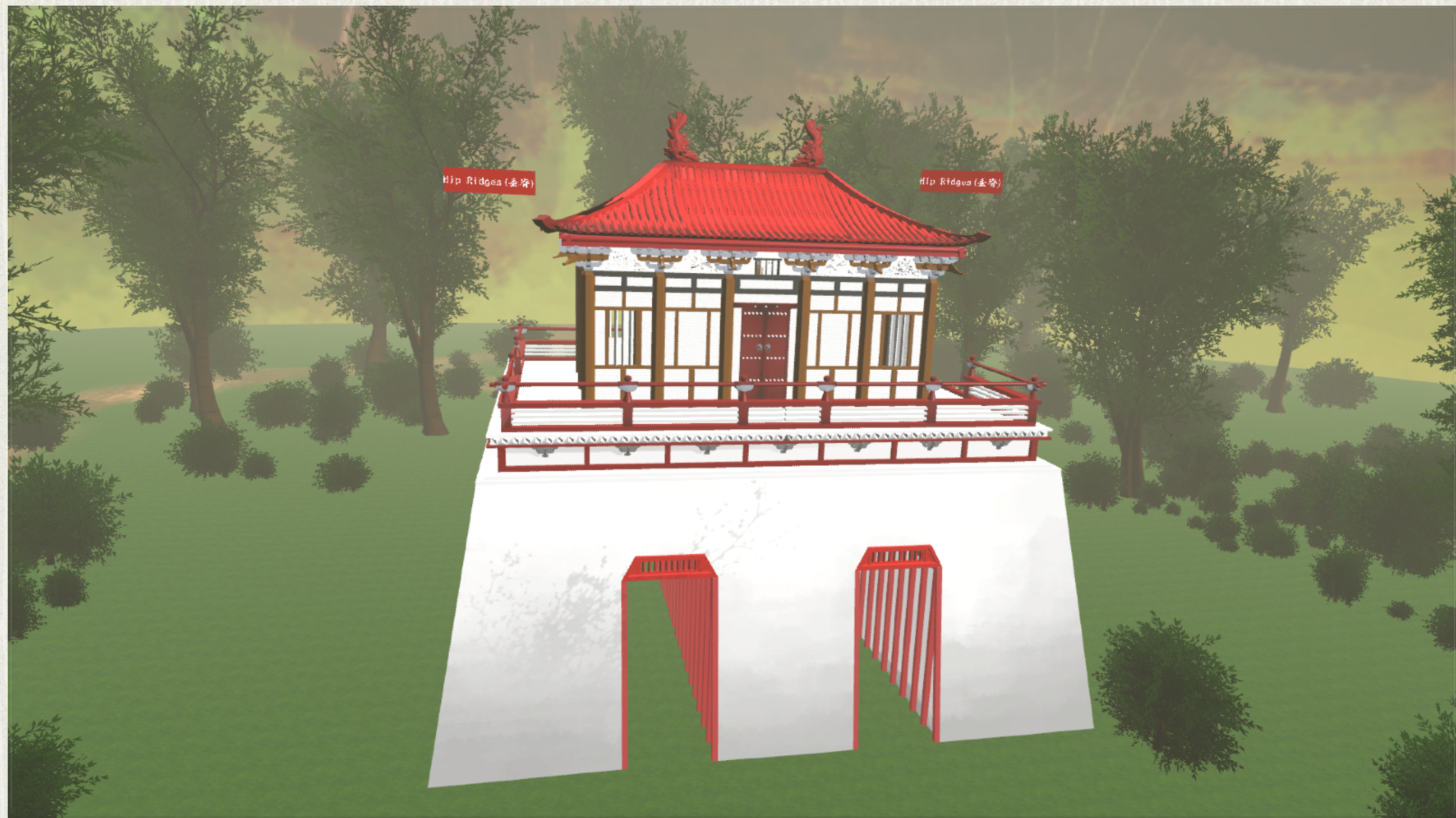


ROTE LEARNING

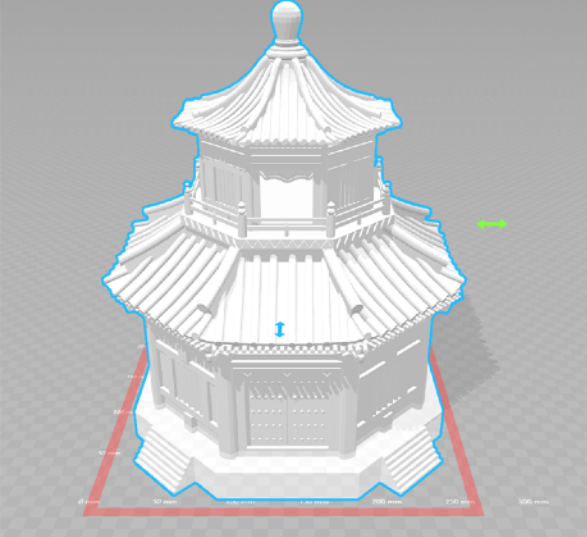
- Images and figures
- No interactive features



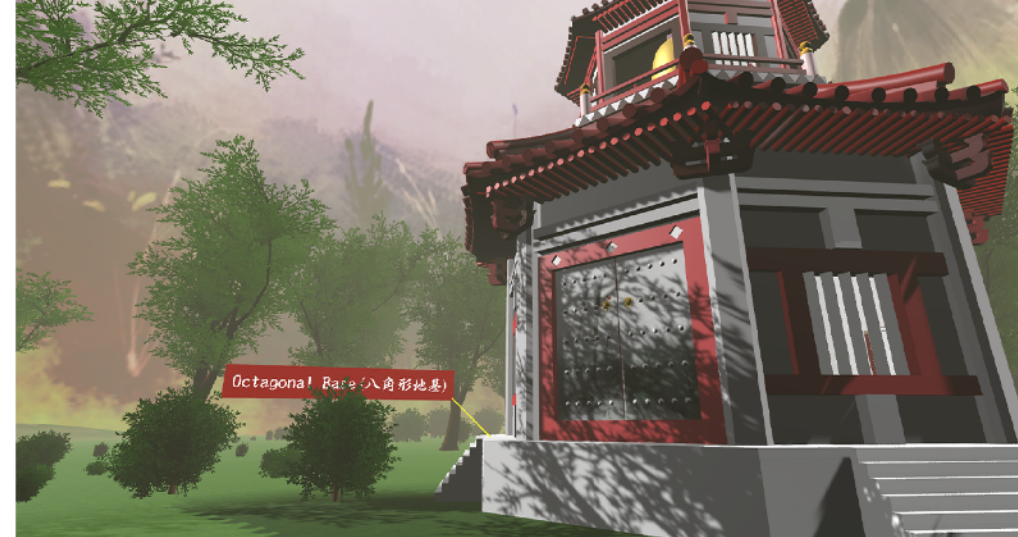
HOW TO ENGAGE STUDENTS IN FLIPPED CLASSROOM LEARNING?



VIRTUAL REALITY



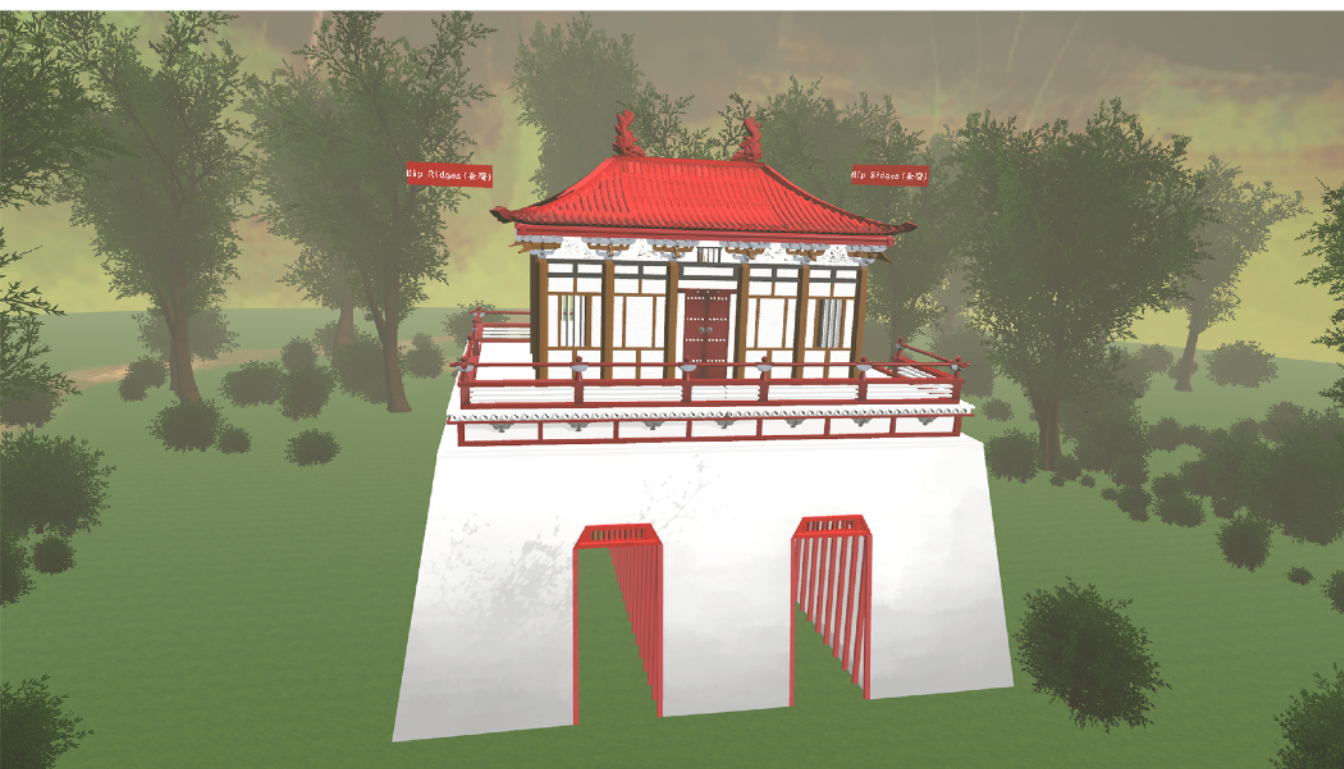
(a)



(b)



(c)



(d)



(e)



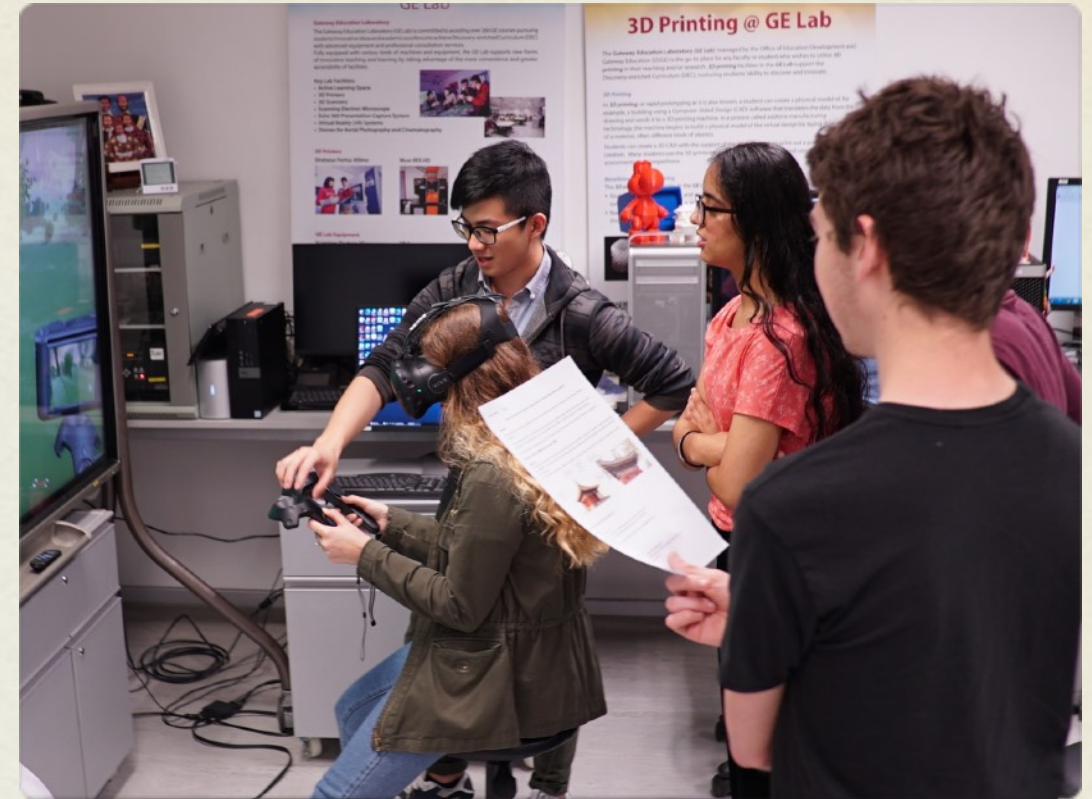
(f)



(g)



(h)





QUANTITATIVE & QUALITATIVE SURVEY

- Feedbacks on perceived learning experience
- Mann-Whitney U-test on VR user and non-VR user

SIGNIFICANT DIFFERENCE IN ACCEPTANCE LEVEL OF VR AND NON-VR USERS

- Perceived ease of use
 - Interactive with 3D architectures
 - Move and explore freely and easily in the 3D simulation environment
- Intention to use
 - Enhanced concentration and learning motivation
 - Wish other classes adopt 3D VR system to facilitate learning

OPEN-ENDED COMMENTS

- Feedbacks on perceived learning experience
- Summary on open-ended comments

COMMENTS AND RECOMMENDATIONS ABOUT THE VR CONTENTS

- Good
- Interesting
- Fun
- Nice

OVERALL LEARNING EXPERIENCE

- Interesting
- Informative
- Good
- Attractive
- Fun
- New experience

CONCLUSIONS

- Students agree to use new technology to support learning
- VR technology does help flipped classroom teaching approach

THANK YOU